

Page 02

2 Pin [Standard]



Page 03

Type F (Schuko)



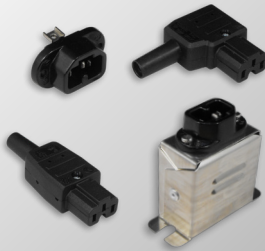
Page 04

3 Pin [C21 & C22]



Page 06

3 Pin [C15A & C16A]



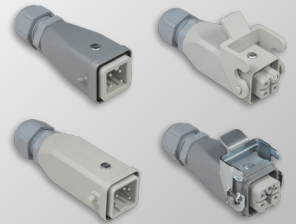
Page 07

3 Pin [C19 & C20]



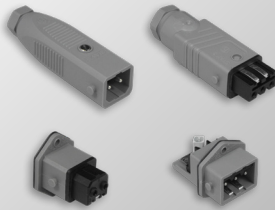
Page 08

Harting [H-A]



Page 09

ST Series



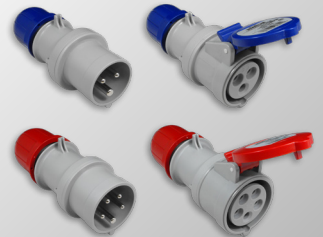
Page 10

Tuchel (Binder)



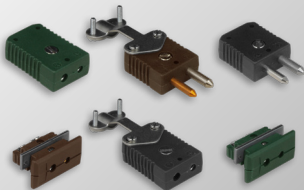
Page 13

Industrial (Commando)



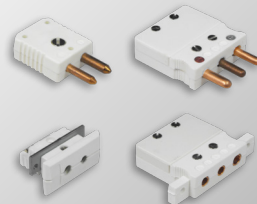
Page 15

Thermocouple (Standard)



Page 17

PT100 (Standard)



Page 18

Thermocouple (Mini)



Page 20

PT100 (Mini)




Page 21

Lemo





STYLE 1.1
2 Pin Metal Plug
FEMALE

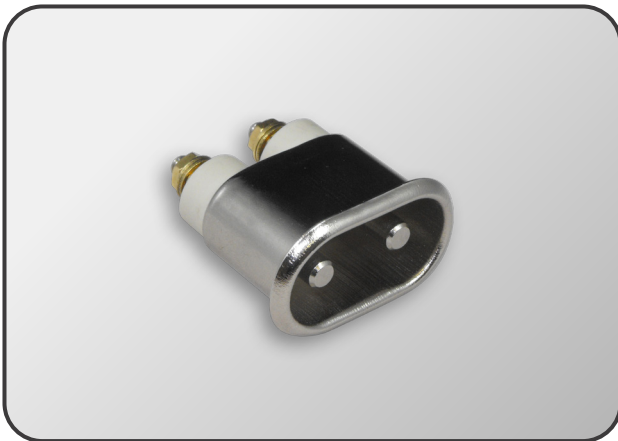
	Standard	@ 90°
Product Code	PLUGGS25S	PLUGGS20S

Max. Temperature	300°C
Rating	16A @ 250V
Case Material	Aluminium
Insert Material	Ceramic


STYLE 1.2
2 Pin Rubber Plug
FEMALE

	Standard	@ 90°
Product Code	PLUGGS100S	PLUGSS200S

Max. Temperature	200°C
Rating	16A @ 250V
Case Material	Perbunan
Insert Material	Siloprene


STYLE 1.3
2 Pin Metal Socket
MALE

	Standard
Product Code	PLUGUFTKS

Max. Temperature	300°C
Rating	16A @ 250V
Case Material	Aluminium
Insert Material	Ceramic


STYLE 1.4
2 Pin Socket Assembly
MALE

	Standard	@ 90°
Product Code	PLUG04499	PLUG19155

Max. Temperature	300°C
Rating	16A @ 250V
Case Material	Aluminium
Insert Material	Ceramic




STYLE 2.1

Type F Plug

MALE

	Standard	@ 90°
Product Code	PLUG10383	Please Enquire

Max. Temperature	200°C
Rating	16A @ 250V
Case Material	Plastic
Insert Material	-


STYLE 2.2

In-Line Type F Socket

FEMALE

	Standard
Product Code	Please Enquire

Max. Temperature	200°C
Rating	16A @ 250V
Case Material	Plastic
Insert Material	-


STYLE 2.3

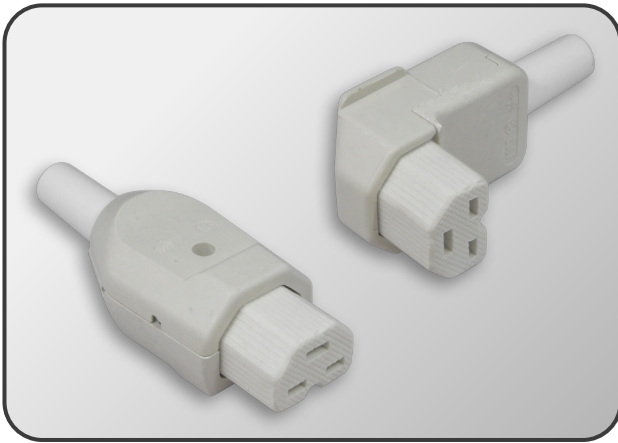
Type F Socket

FEMALE

	Standard
Product Code	Please Enquire

Max. Temperature	200°C
Rating	16A @ 250V
Case Material	Plastic
Insert Material	-






STYLE 3.1

3 Pin Ceramic Plug

FEMALE [C21]

	Standard	@ 90°
Product Code	PLUGCEE25S	PLUGCEE20S


Max. Temperature	300°C
Rating	16A @ 250V
Case Material	Plastic
Insert Material	Ceramic



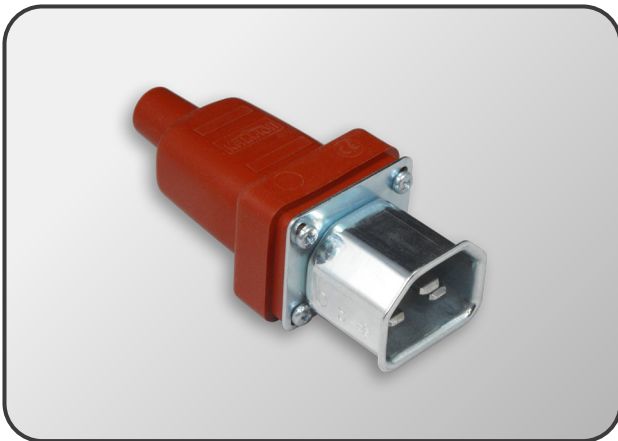
STYLE 3.2

3 Pin Rubber Plug

FEMALE [C21]

	Standard	@ 90°
Product Code	PLUGSS125S	PLUGSS225S

Max. Temperature	200°C
Rating	16A @ 250V
Case Material	Perbunan
Insert Material	Siloprene



STYLE 3.3

3 Pin Metal In-Line Socket

MALE [C22]

	Standard
Product Code	PLUG16234S

Max. Temperature	200°C
Rating	16A @ 250V
Case Material	Siloprene
Insert Material	Stainless Steel



STYLE 3.4

3 Pin Metal Socket

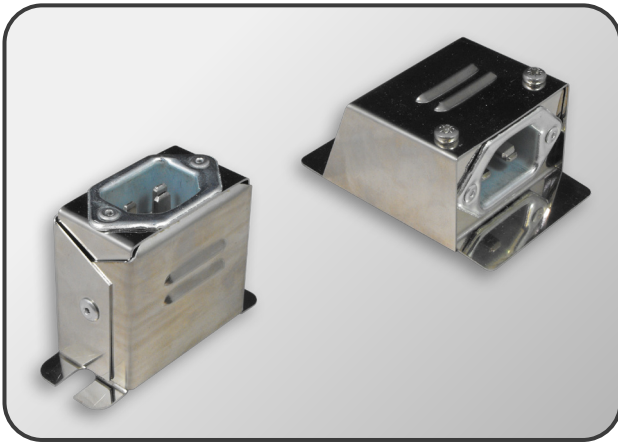
MALE [C22]


	Standard
Product Code	PLUGCEENORMS

Max. Temperature	300°C
Rating	16A @ 250V
Case Material	Steel
Insert Material	Ceramic

Retaining clip option also available.



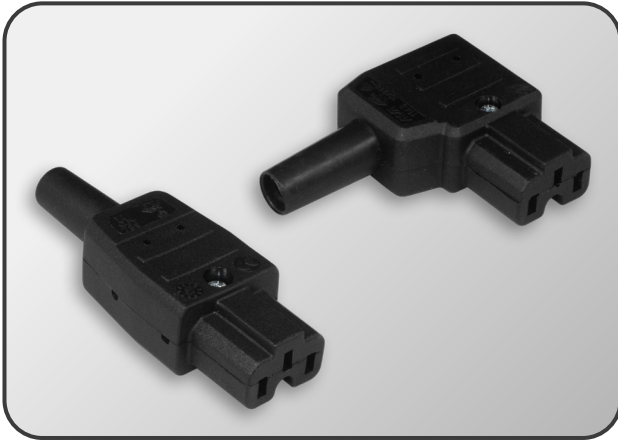

STYLE 3.5
3 Pin Socket Assembly
MALE [C22]

	Standard	@ 90°
Product Code	PLUG03728	PLUG01239

Max. Temperature	300°C
Rating	16A @ 250V
Case Material	Stainless Steel
Insert Material	Ceramic

Retaining clip option also available.





STYLE 4.1

3 Pin Plastic Plug

FEMALE [C15A]

	Standard	@ 90°
Product Code	PLUGHGK25	PLUG18237

Max. Temperature	120°C
Rating	10A @ 250V
Case Material	Plastic
Insert Material	-



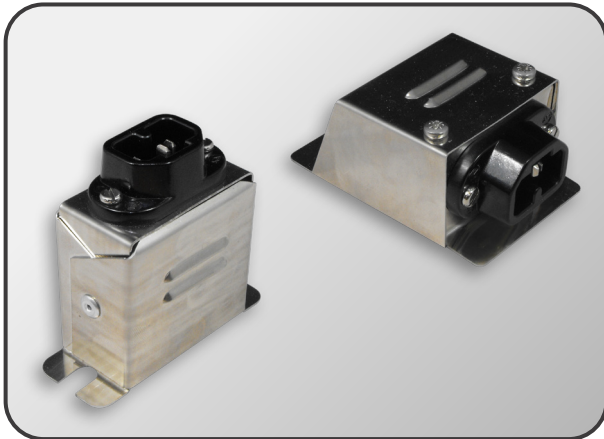
STYLE 4.2

3 Pin Plastic Socket

MALE [C16A]

	Standard
Product Code	PLUGHGSS


Max. Temperature	120°C
Rating	10A @ 250V
Case Material	Plastic
Insert Material	-



STYLE 4.3

3 Pin Socket Assembly

MALE [C16A]

	Standard	@ 90°
Product Code	Please Enquire	Please Enquire

Max. Temperature	120°C
Rating	16A @ 250V
Case Material	Stainless Steel
Insert Material	Plastic




STYLE 5.1
3 Pin Plastic Plug
FEMALE [C19]

	Standard
Product Code	PLUG37345

Max. Temperature	100°C
Rating	16A @ 250V
Case Material	Plastic
Insert Material	-


STYLE 5.2
3 Pin Plastic Plug
MALE [C20]

	Standard
Product Code	PLUG25836

Max. Temperature	100°C
Rating	16A @ 250V
Case Material	Plastic
Insert Material	-


STYLE 5.3
3 Pin Plastic Socket
FEMALE [C19]

	Standard
Product Code	PLUG31835

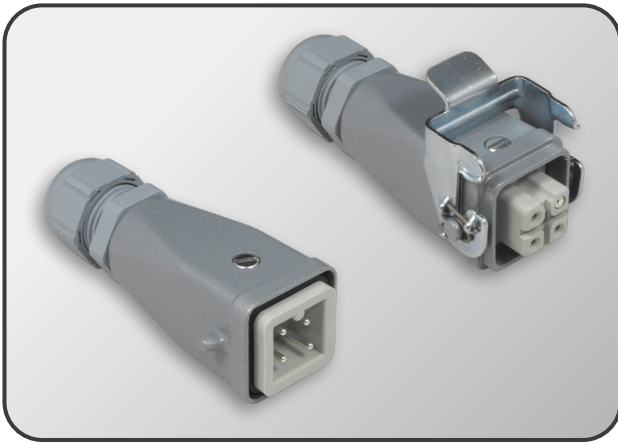
Max. Temperature	100°C
Rating	16A @ 250V
Case Material	Plastic
Insert Material	-


STYLE 5.4
3 Pin Plastic Socket
MALE [C20]

	Standard
Product Code	PLUG29131

Max. Temperature	100°C
Rating	16A @ 250V
Case Material	Plastic
Insert Material	-





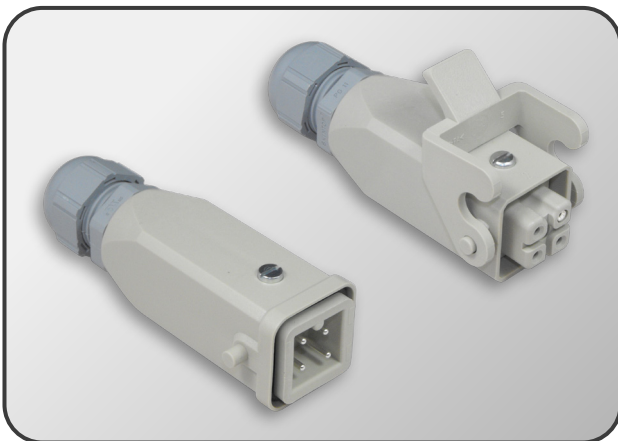
STYLE 6.1

4 Pin Metal

PLUG

	Male	Female
Product Code	PLUG32353	PLUG38270

Max. Temperature	125°C
Rating	10A @ 440V
Case Material	Powder Coated Aluminium
Insert Material	Thermoplastic



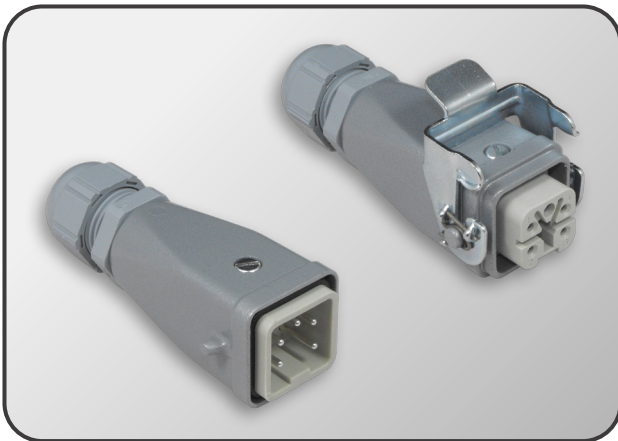
STYLE 6.2

4 Pin Plastic

PLUG

	Male	Female
Product Code	Please Enquire	Please Enquire

Max. Temperature	125°C
Rating	10A @ 440V
Case Material	Thermoplastic
Insert Material	Thermoplastic



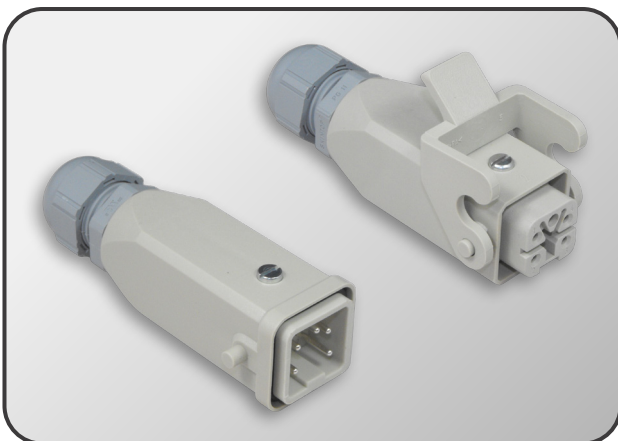
STYLE 6.3

5 Pin Metal

PLUG

	Male	Female
Product Code	PLUG32354	PLUG47347

Max. Temperature	125°C
Rating	10A @ 440V
Case Material	Powder Coated Aluminium
Insert Material	Thermoplastic



STYLE 6.4

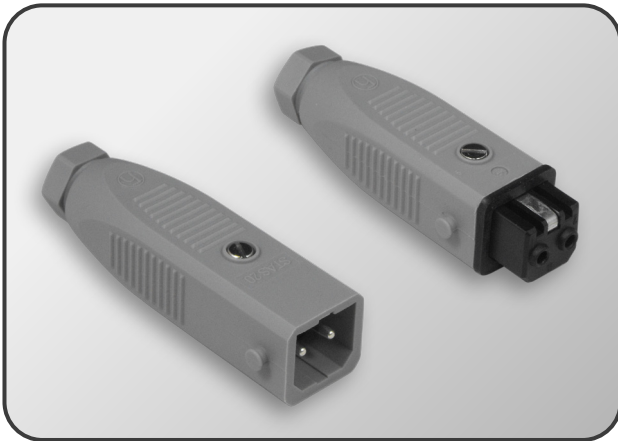
5 Pin Plastic

PLUG

	Male	Female
Product Code	Please Enquire	Please Enquire

Max. Temperature	125°C
Rating	10A @ 440V
Case Material	Thermoplastic
Insert Material	Thermoplastic





STYLE 7.1
2 Pin + Earth
PLUG

	Male [STAS]	Female [STAK]
Product Code	PLUG07141	PLUG07140

Max. Temperature	100°C
Rating	16A @ 250V
Case Material	Plastic
Insert Material	Plastic

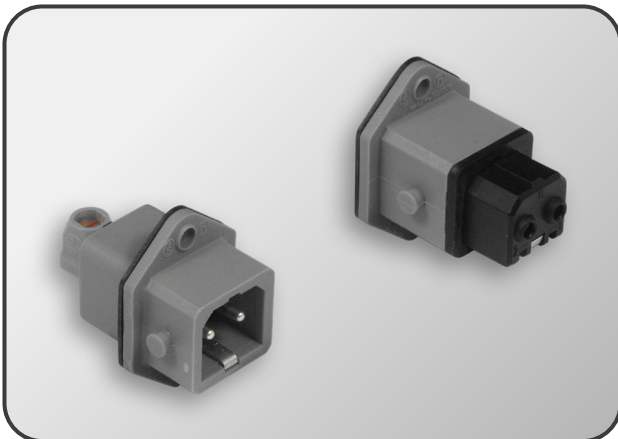
Retaining clip option also available.


STYLE 7.2
3 Pin + Earth
PLUG

	Male [STAS]	Female [STAK]
Product Code	PLUG03737	PLUG03739

Max. Temperature	100°C
Rating	16A @ 250V
Case Material	Plastic
Insert Material	Plastic

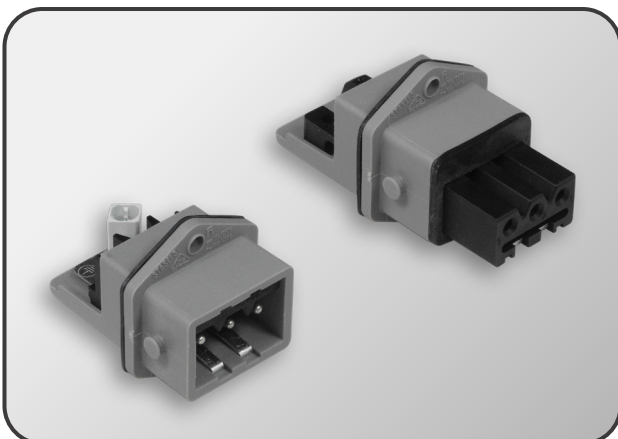
Retaining clip option also available.


STYLE 7.3
2 Pin + Earth
SOCKET

	Male [STASEI]	Female [STAKEI]
Product Code	Please Enquire	PLUG50262

Max. Temperature	100°C
Rating	16A @ 250V
Case Material	Plastic
Insert Material	Plastic

Retaining clip option also available.


STYLE 7.4
3 Pin + Earth
SOCKET


	Male [STASEI]	Female [STAKEI]
Product Code	Please Enquire	PLUG05782

Max. Temperature	100°C
Rating	16A @ 250V
Case Material	Plastic
Insert Material	Plastic

Retaining clip option also available.




STYLE 8.1
Mini 2 Pin Screw Locking
PLUG

	Male	Female
Product Code	PLUG22901S	Please Enquire


Max. Temperature	100°C
Rating	7A @ 250V
Case Material	Aluminium
Insert Material	Plastic


STYLE 8.2
Mini 3 Pin Screw Locking
PLUG

	Male	Female
Product Code	PLUG05560	PLUG30838


Max. Temperature	100°C
Rating	7A @ 250V
Case Material	Aluminium
Insert Material	Plastic


STYLE 8.3
3 Pin Screw Locking
PLUG

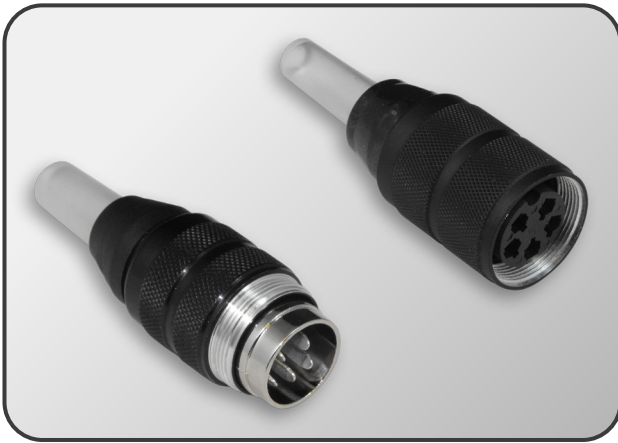
	Male	Female
Product Code	PLUG02773S	PLUG09462S


Max. Temperature	100°C
Rating	7A @ 250V
Case Material	Aluminium
Insert Material	Aluminium [Male] / Plastic [Female]


STYLE 8.4
3 Pin Bayonet Locking
PLUG

	Male	Female
Product Code	PLUG06086S	PLUG15473


Max. Temperature	100°C
Rating	7A @ 250V
Case Material	Plastic
Insert Material	Aluminium [Male] / Plastic [Female]


STYLE 8.5
5 Pin Screw Locking
PLUG

	Male	Female
Product Code	PLUG06033S	PLUG35289S


Max. Temperature	100°C
Rating	7A @ 250V
Case Material	Aluminium
Insert Material	Aluminium [Male] / Plastic [Female]


STYLE 8.6
3 Pin Bayonet Locking
PLUG

	Male	Female
Product Code	PLUG06032S	PLUG08616


Max. Temperature	100°C
Rating	7A @ 250V
Case Material	Plastic
Insert Material	Aluminium [Male] / Plastic [Female]


STYLE 8.7
Mini 2 Pin Screw Locking
SOCKET

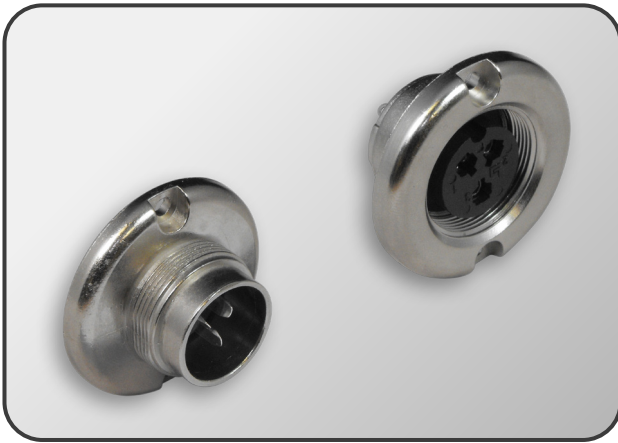
	Male	Female
Product Code	Please Enquire	PLUG38015

Max. Temperature	100°C
Rating	7A @ 250V
Case Material	Aluminium
Insert Material	Aluminium [Male] / Plastic [Female]


STYLE 8.8
Mini 3 Pin Screw Locking
SOCKET

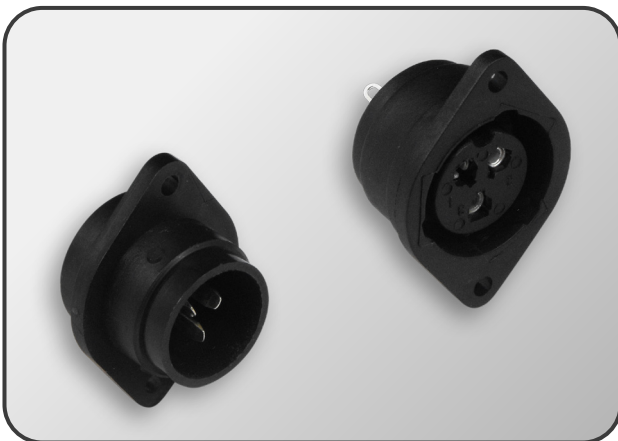
	Male	Female
Product Code	Please Enquire	Please Enquire

Max. Temperature	100°C
Rating	7A @ 250V
Case Material	Plastic
Insert Material	Aluminium [Male] / Plastic [Female]


STYLE 8.9
3 Pin Screw Locking
SOCKET

	Male	Female
Product Code	PLUG23999	PLUG02774S

Max. Temperature	100°C
Rating	7A @ 250V
Case Material	Aluminium
Insert Material	Aluminium [Male] / Plastic [Female]


STYLE 8.10
3 Pin Bayonet Locking
SOCKET

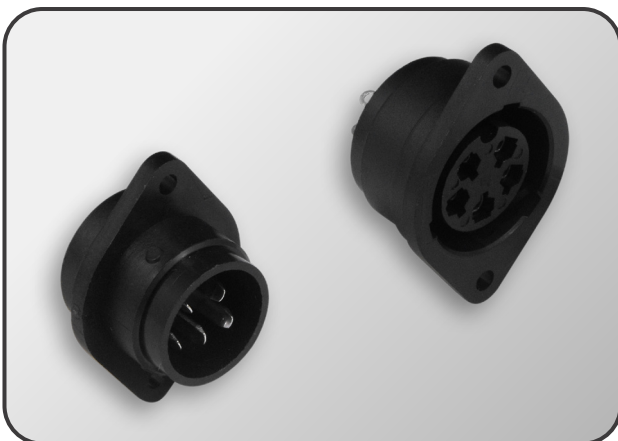
	Male	Female
Product Code	PLUG51134	PLUG08615S

Max. Temperature	100°C
Rating	7A @ 250V
Case Material	Plastic
Insert Material	Plastic


STYLE 8.11
5 Pin Screw Locking
SOCKET

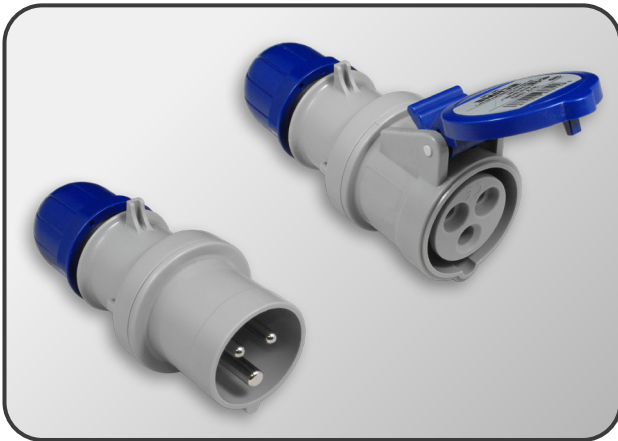
	Male	Female
Product Code	PLUG51137	PLUG51136

Max. Temperature	100°C
Rating	7A @ 250V
Case Material	Aluminium
Insert Material	Aluminium [Male] / Plastic [Female]


STYLE 8.12
5 Pin Bayonet Locking
SOCKET

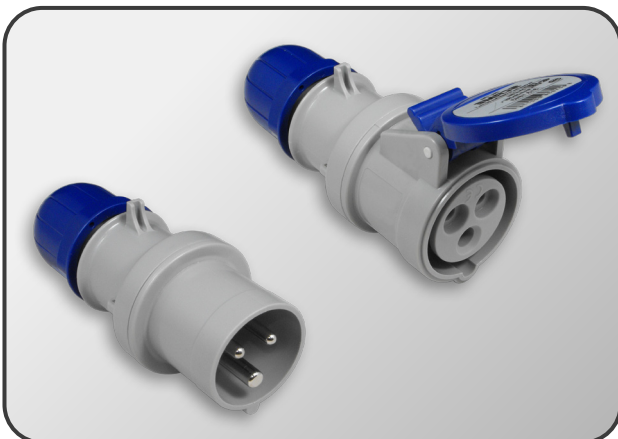
	Male	Female
Product Code	PLUG51135	PLUG30507

Max. Temperature	100°C
Rating	7A @ 250V
Case Material	Plastic
Insert Material	Plastic


STYLE 9.1
3 Pin 230V 16A
PLUG

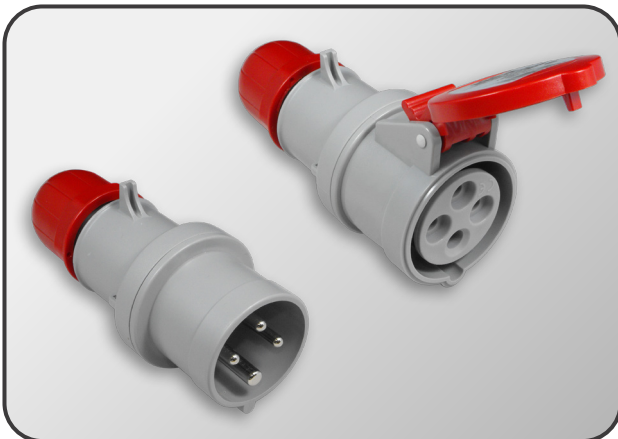
	Male	Female
Product Code	PLUG45886	Please Enquire

Max. Temperature	60°C
Rating	16A @ 230V
Case Material	Plastic
Insert Material	Plastic


STYLE 9.2
3 Pin 230V 32A
PLUG

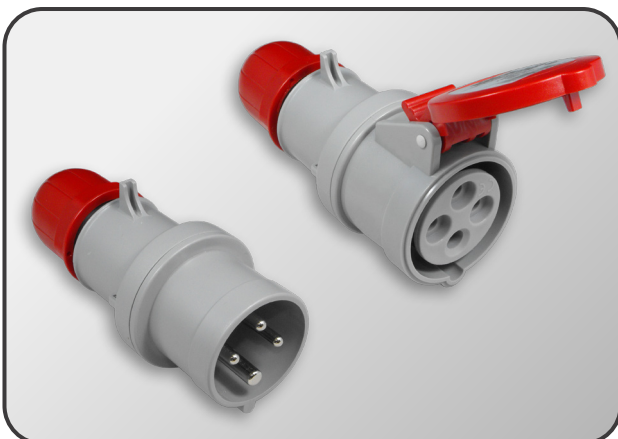
	Male	Female
Product Code	PLUG42212	PLUG46107

Max. Temperature	60°C
Rating	32A @ 230V
Case Material	Plastic
Insert Material	Plastic


STYLE 9.3
4 Pin 415V 16A
PLUG

	Male	Female
Product Code	PLUG42090	PLUG51052

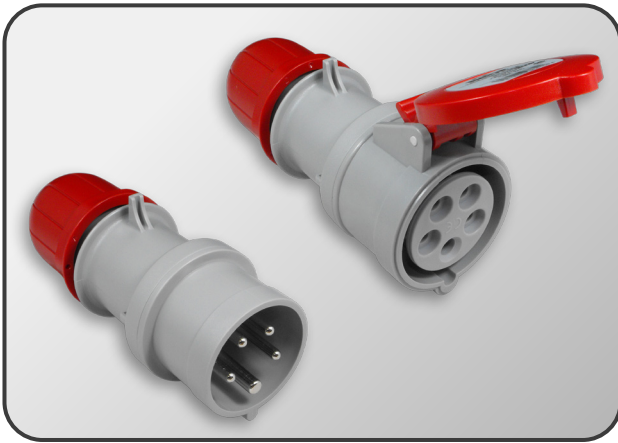
Max. Temperature	60°C
Rating	16A @ 415V
Case Material	Plastic
Insert Material	Plastic



STYLE 9.4
4 Pin 415V 32A
PLUG

	Male	Female
Product Code	Please Enquire	PLUG46108

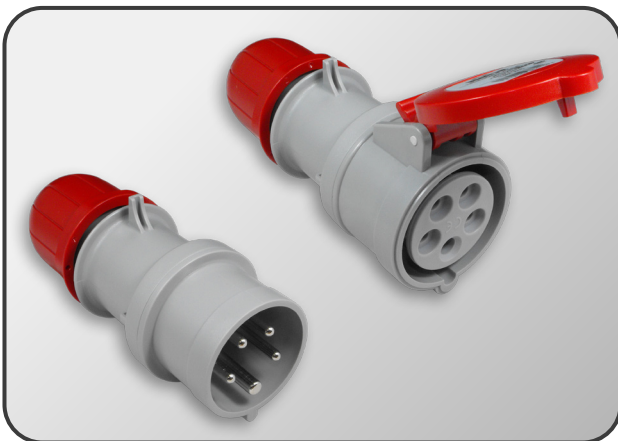
Max. Temperature	60°C
Rating	32A @ 415V
Case Material	Plastic
Insert Material	Plastic




STYLE 9.5
5 Pin 415V 16A
PLUG

	Male	Female
Product Code	Please Enquire	Please Enquire

Max. Temperature	60°C
Rating	16A @ 415V
Case Material	Plastic
Insert Material	Plastic


STYLE 9.6
4 Pin 415V 32A
PLUG

	Male	Female
Product Code	PLUG39571	Please Enquire

Max. Temperature	60°C
Rating	32A @ 415V
Case Material	Plastic
Insert Material	Plastic






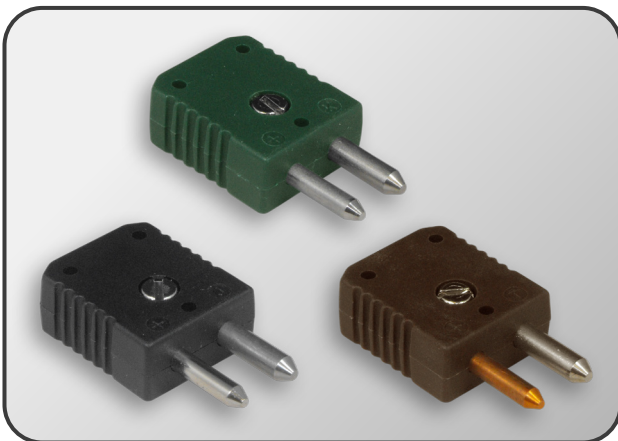
STYLE 10.1

2 Pin Plug Set

MALE & FEMALE

	Type 'J'	Type 'K'	Type 'T'
Product Code	PLUG08656	PLUG05734	Please Enquire


Max. Temperature	220°C
Pin Type	Round
Case Material	Plastic
Insert Material	-



STYLE 10.2

2 Pin Plug

MALE

	Type 'J'	Type 'K'	Type 'T'
Product Code	PLUG01543	PLUG18705	PLUG21430

Max. Temperature	220°C
Pin Type	Round
Case Material	Plastic
Insert Material	-


High temperature option also available.



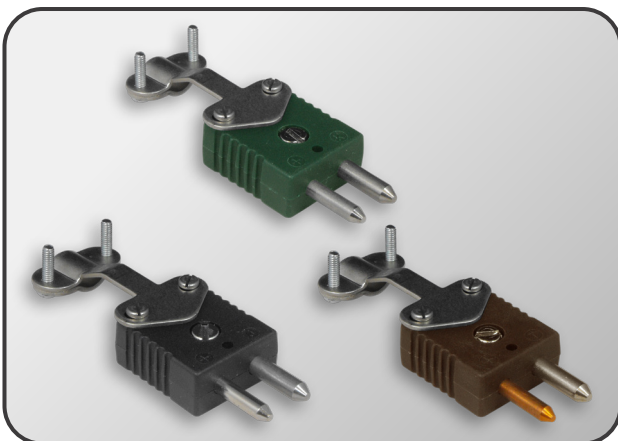
STYLE 10.3

2 Pin Plug

FEMALE

	Type 'J'	Type 'K'	Type 'T'
Product Code	PLUG02230	PLUG12855	PLUG21431

Max. Temperature	220°C
Pin Type	Round
Case Material	Plastic
Insert Material	-



STYLE 10.4

2 Pin Plug + Cable Support

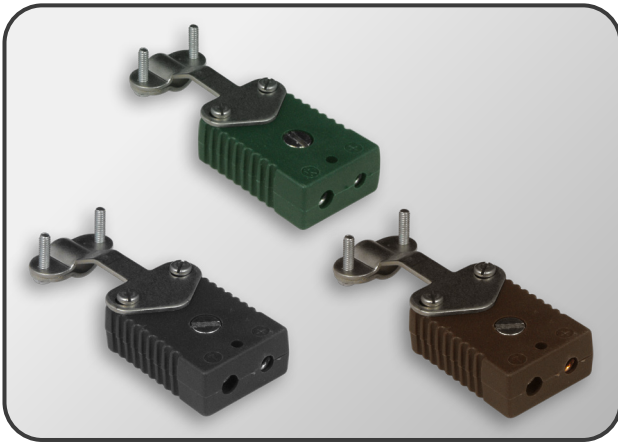
MALE

	Type 'J'	Type 'K'	Type 'T'
Product Code	PLUG11162	Please Enquire	PLUG21557

Max. Temperature	220°C
Pin Type	Round
Case Material	Plastic
Insert Material	-

High temperature option also available.

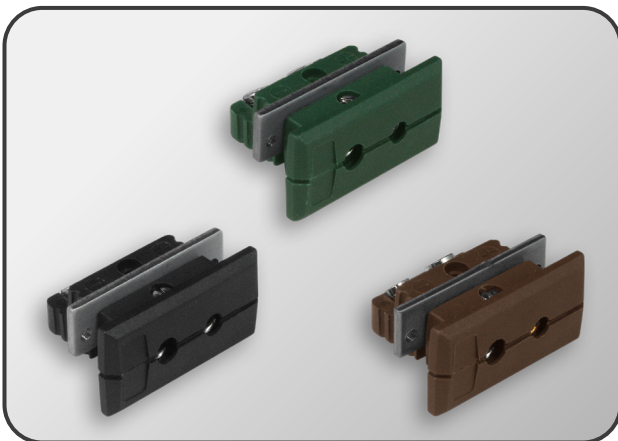




STYLE 10.5
2 Pin Plug + Cable Support
FEMALE

	Type 'J'	Type 'K'	Type 'T'
Product Code	PLUG17423	Please Enquire	PLUG21558

Max. Temperature	220°C
Pin Type	Round
Case Material	Plastic
Insert Material	-

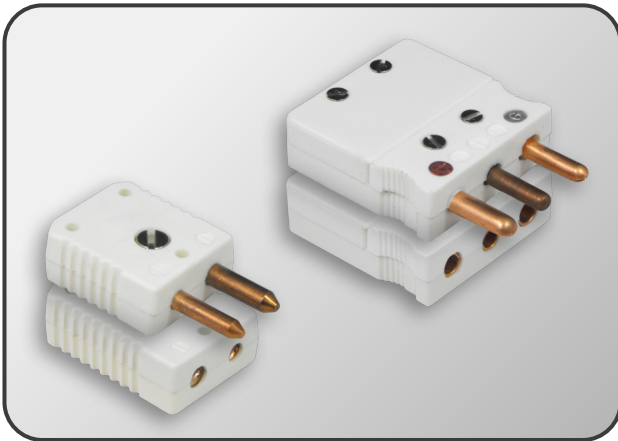
High temperature option also available.


STYLE 10.6
2 Pin Socket
FEMALE

	Type 'J'	Type 'K'	Type 'T'
Product Code	PLUG14934	PLUG08181	Please Enquire

Max. Temperature	220°C
Pin Type	Round
Case Material	Plastic
Insert Material	-





STYLE 11.1

PT100 Plug Set

MALE & FEMALE

	2 Pin	3 Pin
Product Code	Please Enquire	PLUG41677

Max. Temperature	220°C
Pin Type	Round
Case Material	Plastic
Insert Material	-



STYLE 11.2

PT100 Plug

MALE

	2 Pin	3 Pin
Product Code	PLUG16812	Please Enquire

Max. Temperature	220°C
Pin Type	Round
Case Material	Plastic
Insert Material	-



STYLE 11.3

PT100 Plug

FEMALE

	2 Pin	3 Pin
Product Code	PLUG16811	PLUG14128

Max. Temperature	220°C
Pin Type	Round
Case Material	Plastic
Insert Material	-



STYLE 11.4


PT100 Socket

FEMALE

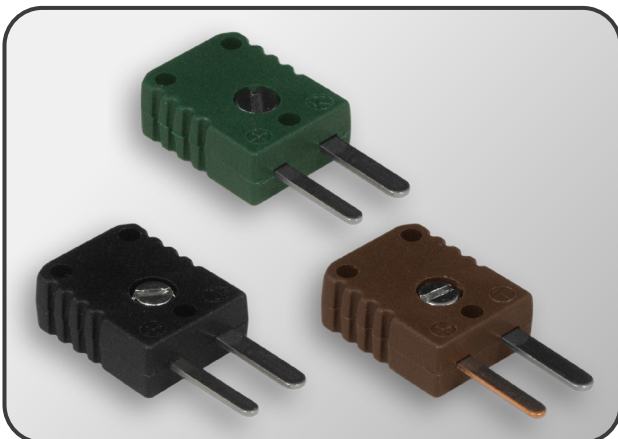
	2 Pin	3 Pin
Product Code	Please Enquire	Please Enquire


Max. Temperature	220°C
Pin Type	Round
Case Material	Plastic
Insert Material	-


STYLE 12.1
2 Pin Plug Set
MALE & FEMALE

	Type 'J'	Type 'K'	Type 'T'
Product Code	PLUG51036	PLUG50563	Please Enquire


Max. Temperature	220°C
Pin Type	Flat
Case Material	Plastic
Insert Material	-


STYLE 12.2
2 Pin Plug
MALE

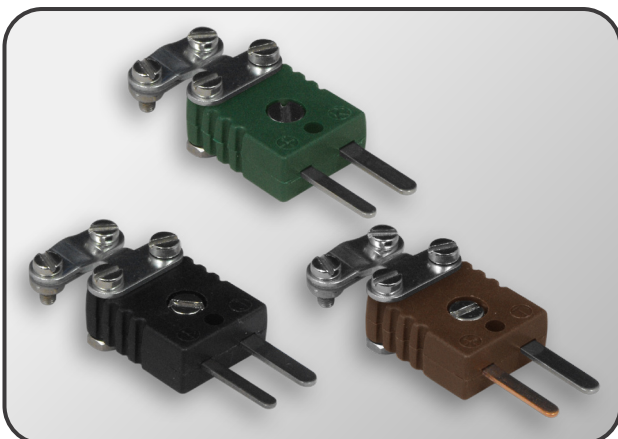
	Type 'J'	Type 'K'	Type 'T'
Product Code	PLUG27355	PLUG00961	Please Enquire


Max. Temperature	220°C
Pin Type	Flat
Case Material	Plastic
Insert Material	-


STYLE 12.3
2 Pin Plug
FEMALE

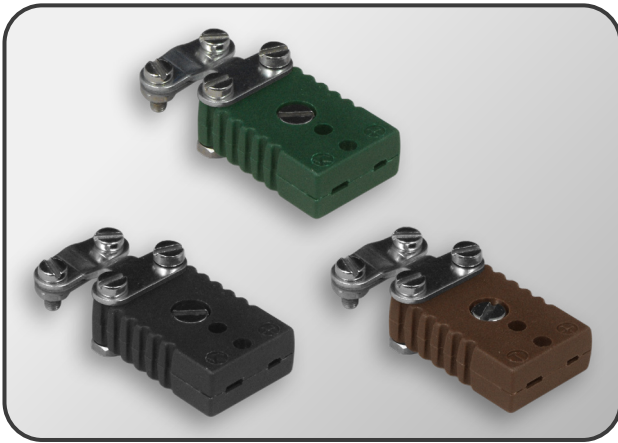
	Type 'J'	Type 'K'	Type 'T'
Product Code	PLUG27356	PLUG43154	Please Enquire


Max. Temperature	220°C
Pin Type	Flat
Case Material	Plastic
Insert Material	-


STYLE 12.4
2 Pin Plug + Cable Support
MALE

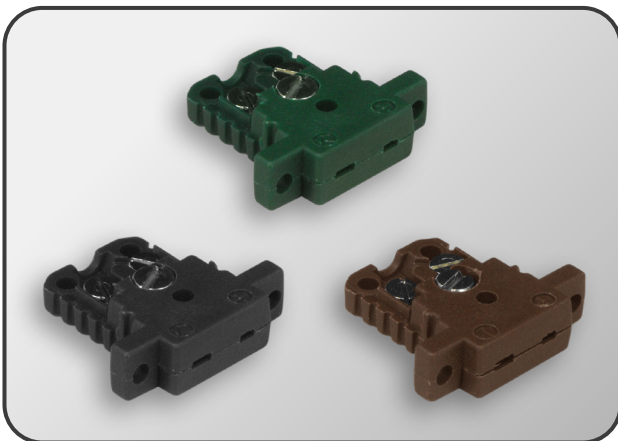
	Type 'J'	Type 'K'	Type 'T'
Product Code	PLUG34919	Please Enquire	Please Enquire

Max. Temperature	220°C
Pin Type	Flat
Case Material	Plastic
Insert Material	-


STYLE 12.5
2 Pin Plug + Cable Support
FEMALE

	Type 'J'	Type 'K'	Type 'T'
Product Code	Please Enquire	Please Enquire	Please Enquire

Max. Temperature	220°C
Pin Type	Flat
Case Material	Plastic
Insert Material	-


STYLE 12.6
2 Pin Socket
FEMALE

	Type 'J'	Type 'K'	Type 'T'
Product Code	Please Enquire	Please Enquire	Please Enquire

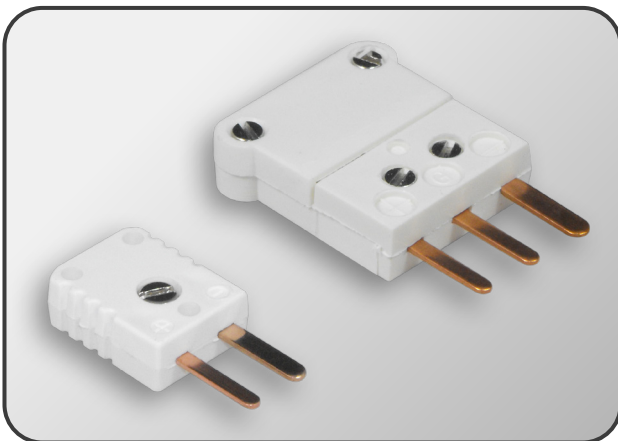
Max. Temperature	220°C
Pin Type	Flat
Case Material	Plastic
Insert Material	-





STYLE 13.1
PT100 Plug Set
MALE & FEMALE

	2 Pin	3 Pin
Product Code	Please Enquire	PLUG41678

Max. Temperature	220°C
Pin Type	Flat
Case Material	Plastic
Insert Material	-


STYLE 13.2
PT100 Plug
MALE

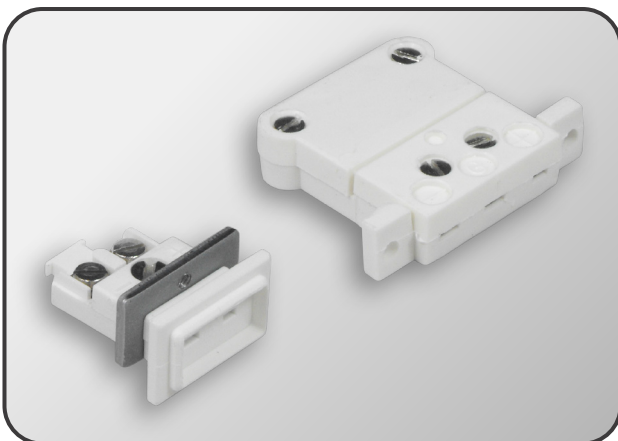
	2 Pin	3 Pin
Product Code	PLUG16812	Please Enquire


Max. Temperature	220°C
Pin Type	Flat
Case Material	Plastic
Insert Material	-


STYLE 13.3
PT100 Plug
FEMALE

	2 Pin	3 Pin
Product Code	PLUG36420	Please Enquire

Max. Temperature	220°C
Pin Type	Flat
Case Material	Plastic
Insert Material	-


STYLE 13.4
PT100 Socket
FEMALE

	2 Pin	3 Pin
Product Code	PLUG36331	Please Enquire

Max. Temperature	220°C
Pin Type	Flat
Case Material	Plastic
Insert Material	-




STYLE 14.1
1 Series Plug
2 POLE

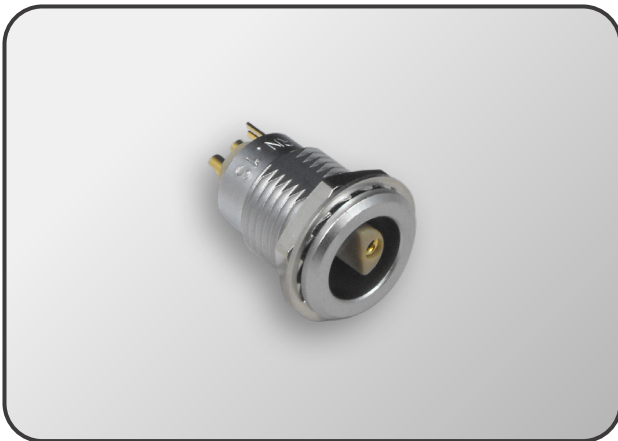
	Male	Female
Product Code	PLUG26546	PLUG26547

Max. Temperature	250°C
Contacts	1 x Male / 1 x Female
Case Material	Chrome/Nickel Plated Brass
Insert Material	Glass Fibre Enforced Thermoplastic


STYLE 14.2
2 Series Plug
2 POLE

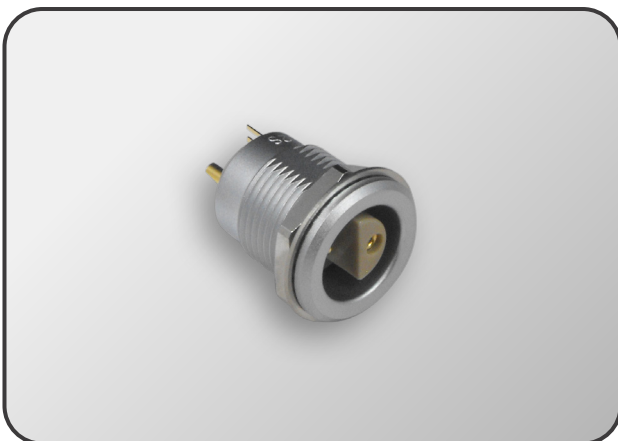
	Male	Female
Product Code	PLUG17370	Please Enquire

Max. Temperature	250°C
Contacts	1 x Male / 1 x Female
Case Material	Chrome/Nickel Plated Brass
Insert Material	Glass Fibre Enforced Thermoplastic


STYLE 14.3
1 Series Socket
2 POLE

	Female
Product Code	Please Enquire

Max. Temperature	250°C
Contacts	1 x Male / 1 x Female
Case Material	Chrome/Nickel Plated Brass
Insert Material	Glass Fibre Enforced Thermoplastic


STYLE 14.4
2 Series Socket
2 POLE

	Female
Product Code	Please Enquire

Max. Temperature	250°C
Contacts	1 x Male / 1 x Female
Case Material	Chrome/Nickel Plated Brass
Insert Material	Glass Fibre Enforced Thermoplastic